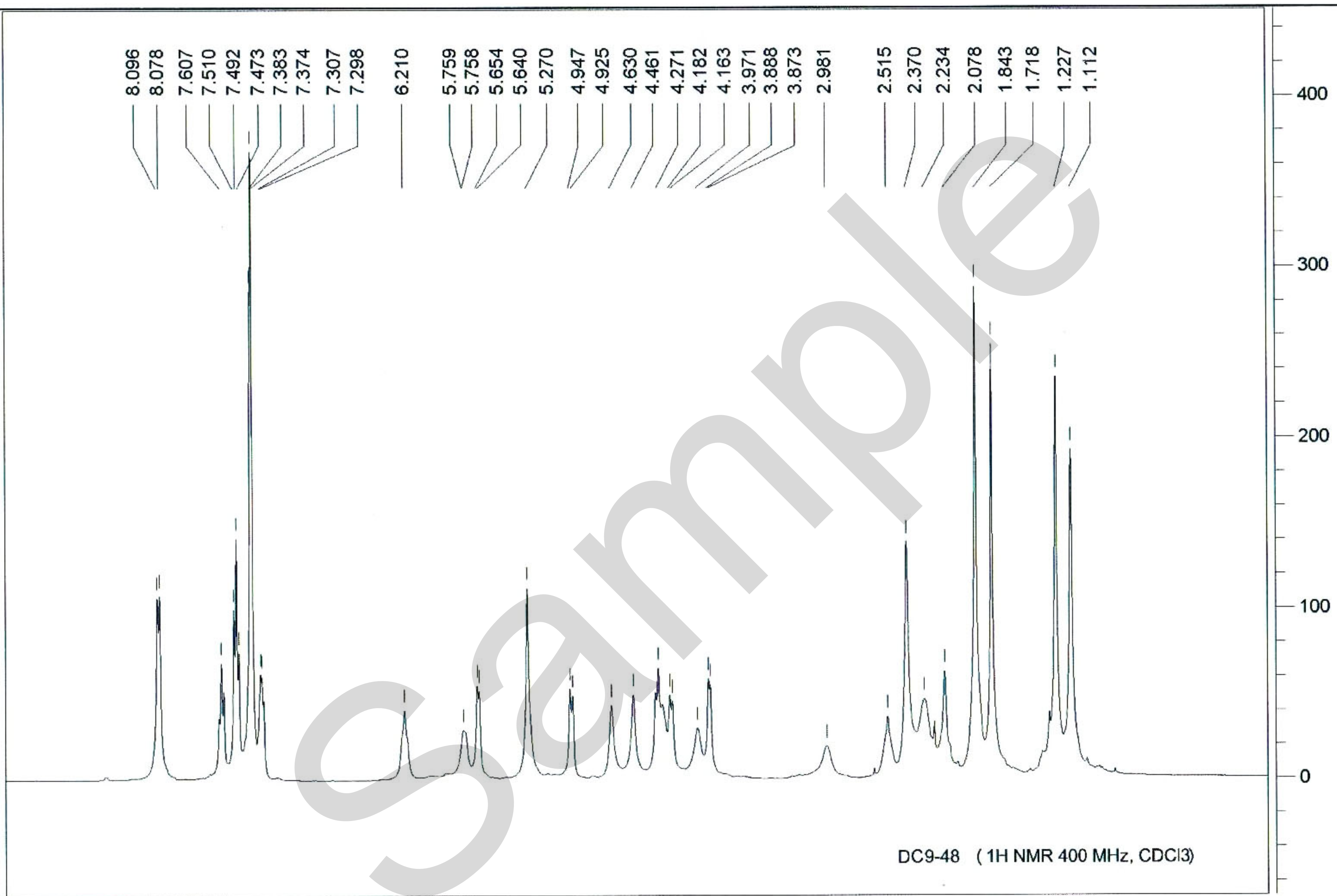


8.096
8.078
7.607
7.510
7.492
7.473
7.383
7.374
7.307
7.298
6.210
5.759
5.758
5.654
5.640
5.270
4.947
4.925
4.630
4.461
4.271
4.182
4.163
3.971
3.888
3.873
2.981
2.515
2.370
2.234
2.078
1.843
1.718
1.227
1.112



9.0
8.0
7.0
6.0
5.0
4.0
3.0
2.0
1.0
0.0
ppm (f1)